

TAMK Language and Communication Studies

Language Info, autumn 2021

At a UAS, You Learn Professional Language

- Professional terminology
- Work-related cases and situations
- Authentic professional documents
- Oral and written communication with clients and colleagues

→ **Probably very different from your earlier language studies!**



Language Teaching Is Based on the Government Decree

The student is required to demonstrate that you have attained through studies included in your university of applied sciences degree or otherwise:

such proficiency in **Finnish and Swedish** as is by law (6.6.2003/424) required of state officials functioning in a position requiring a higher education in a bilingual office and that is necessary for practising the profession and for professional development

and (16.6.2004/497)

such degree programme based oral and written proficiency in **one or two foreign languages** as is necessary for practising the profession and for professional development.



Language Studies in Your Degree Programme



Language Studies at TAMK Continue from Where Secondary School Studies Ended

- Starting skill level for English:
7–10 years of studies (level B1.2–B2.1 on the [Common European Framework of Reference](#) (CEFR))
- Starting skill level for Swedish:
6–8 years of studies (level A2–B1 on the CEFR)



English and Swedish Starting Skill Level Tests

- **All students starting their degree studies at TAMK** take starting level tests in English and Swedish regardless of their previous studies (excluding students who are applying for exemption from English or Swedish). The tests are taken **right at the beginning of the studies**, and they can be taken only once.
- The tests are in TUNI **Moodle**, and the student can take them **independently anywhere** and **anytime**. It is forbidden to use any help when taking the tests, and it is not sensible either, as then the result will be useless for the student.
- The tests will give the student **information about his/her skill level** and **a recommendation on how to proceed**. If a preparatory course is recommended for the student, it should be taken before the mandatory professional language course. It is also possible to take a preliminary course even if the tests don't recommend it. Hence, the test results are not binding, but instead designed to give the student valuable information regarding how to proceed in his/her studies.
- The tests will not be included in the transcript of records nor can they be accredited. The test instructions are in Finnish.

TESTS

English: <https://moodle.tuni.fi/course/view.php?id=15719>, key english

Swedish: <https://moodle.tuni.fi/course/view.php?id=15947>, key svenska

Language Studies in Your Degree Programme

- Your degree programme contains mandatory **Finnish, Swedish and English** courses. More information about them can be found through the curriculum of your programme: <https://opinto-opas-ops.tamk.fi/index.php/en/en/en>



Demonstrating Proficiency in the Second Official Language

- As part of the university of applied sciences studies, the student demonstrates his/her proficiency in the **second official language** (Finnish/Swedish).
- A separate statement on the **oral and written** proficiency in the second official language is included in the degree certificate.
- The oral and written proficiency is assessed on the scale 0–5:
 - 0 = **fail**
 - 1–3 = **satisfactory**
 - 4–5 = **good**
- The requirement for demonstrating proficiency in second official language **does not apply to students who have completed their school education in some other language than Finnish or Swedish or completed their school education abroad.**



Elective and Preparatory Language Studies



You Can Continue Studying a Language or Start Learning a New One!

- **TAMK elective language studies:** <https://www.tuni.fi/studentguide/handbook/tamk/4653/4704?page=3126#elective> (Finnish, English, Swedish, Russian, German, French)
- **TUNI cross-institutional studies:** <https://crossinstitutionalstudies.tuni.fi> (a broad selection of languages)
- **Each One Teach One** peer learning: <http://rebrand.ly/eoto> (a broad selection of languages)
- **KiVAKO courses:** <https://digicampus.fi/course/index.php?categoryid=4> (Spanish, Italian, Japanese, Chinese, Korean, Portuguese, French, German, Sign Language, Russian, Estonian, UniTandem peer learning)
- **Campus Online:** <https://campusonline.fi/en/> (e.g. Finnish, Swedish, German)

In many of these courses, the language of instruction is Finnish.

Preparatory Courses

- The aim of preparatory courses is to **reach the starting skill level for professional language courses**
- It is advisable to take a preparatory course if the **starting skill level test results** recommend it
- Preparatory courses should be done **½–1 year before professional language courses**
- The language of instruction in preparatory courses is mostly Finnish
- Preparatory courses are available for English and Swedish both as classroom and online teaching, and the **updating course selection** can be found in the Student's Guide:
<https://www.tuni.fi/studentsguide/handbook/tamk/4653/4704?page=3126#preparatory>



If Your Mother Tongue Is Not Finnish

- SIMHE (Supporting Immigrants in Higher Education in Finland) Tampere organises Finnish courses for students **whose native or home language is not Finnish**
- The courses are **free for all students** and they can be taken for example to replace the Swedish course in case of an exemption
- Coming up in autumn 2021
 - **Support for Finnish I–V**, 5 ECTS, starts on 1.10., at least B2 skill level, Tampere University, teacher TBA
 - **Writing in Finnish**, 2 ECTS, starts on 25.10., at least B1 skill level, ella.hakala@tuni.fi
 - **Finnish for Working Life**, 2 ECTS, starts on 6.9., at least A2–B2 skill level, marja.oksanen@tuni.fi
 - **Discussion Course in Finnish**, 1 ECTS, two implementations which start on 13.9. & 25.10., at least B1 skill level, ella.hakala@tuni.fi
 - In addition to these courses, marja.oksanen@tuni.fi runs a **workshop to support written assignments**, such as writing the thesis.
- More information: SIMHE Tampere johanna.granlund@tuni.fi & <https://www.tuni.fi/en/study-with-us/simhe/finnish-language-studies>



Credit Transfer and Exemption



You Can Apply for Credit Transfer if

- ... you have already **completed studies of the same level** and with equivalent learning outcomes at **another higher education institution within the past 10 years**
- ... you have **competence related to course contents acquired elsewhere**, which you will demonstrate under the RVPL (Recognition and Validation of Prior Learning) system
- If your earlier language studies related to a **different field** or if their scope is different, you will need to do some additional learning assignments related to the current field of study.
- You must submit the credit transfer application to the teacher of the course concerned **before the beginning of the course** using the accreditation page in Pakki.



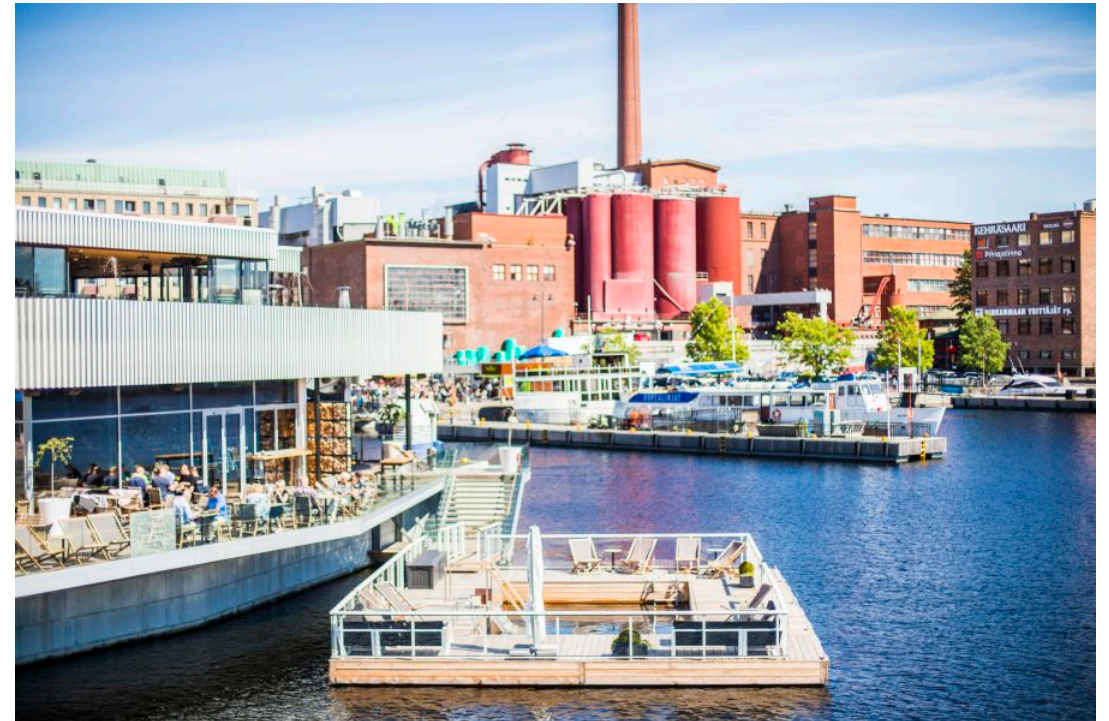
Credit Transfer for Formal Learning

- **Substitution** (a diploma required)
 - Studies of the same field which have been completed elsewhere and which correspond to the contents at TAMK are accepted as part of your studies.
- **Inclusion** (a diploma required)
 - Studies which have been completed elsewhere are added to your studies (usually free-choice studies)



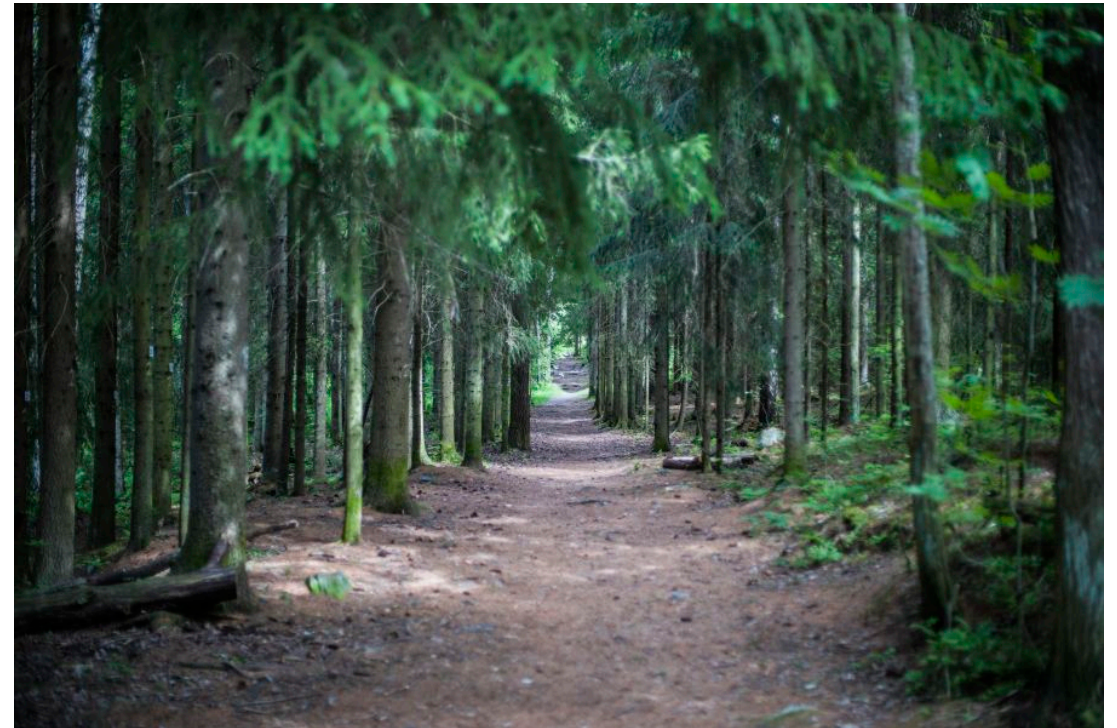
Recognition and Validation of Prior Learning (RVPL)

- The student demonstrates competence acquired elsewhere (no diploma required).
- Competence may be demonstrated for instance by portfolio, learning diary, project work, exam, expert lecture, etc.
- You must submit the RVPL application to the teacher of the course concerned **before the beginning of the course** using the accreditation page in Pakki.
- More information about credit transfer: <https://www.tuni.fi/studentsguide/handbook/tamk/4653/4704?page=3126#credit>



You Can Apply for Exemption from Swedish if

- ... you have **never studied Swedish**.
- ... you have **dyslexia that severely complicates your language studies**.
- If you are exempted, you have to choose some other language or introduction course instead of Swedish.
- More information about applying for exemption:
<https://www.tuni.fi/studentguide/handbook/tamk/4653/4704?page=3126#exemption>



Thesis and Maturity Test



Thesis and Maturity Test

- Every degree programme at TAMK includes the requirement to write a final thesis, which is an **independent, self-contained learning project worth 15 ECTS credits for bachelor's programmes** (20 ECTS for midwifery and nursing degree programmes), and 30 ECTS for master's programmes.
- Intra's [Thesis at TAMK](#) page provides a detailed description of the thesis process, including **instructions** about the form and structure of the written report. In addition, the [Thesis Report Guide](#), the [Thesis Template](#) and the [Style Guide for Tampere Universities](#) should be useful.
- TAMK theses always include **abstracts in Finnish and in English (or another foreign language)**
- Students have to write a **maturity test** on the field of the thesis to demonstrate their familiarity with the field and Finnish or Swedish language skills depending on the language of their school education.
 - The maturity test can be taken **in Finnish or in English** if students have received their school education in some language other than **Finnish** or **Swedish** or completed their school education abroad.
 - In Finland, the language of school education is the language in which the person has completed the comprehensive school or the general upper secondary school, if the person has completed the general upper secondary school. If the person has completed a vocational qualification, the language of school education is however determined based on the comprehensive school leaving certificate.
- More information: <https://www.tuni.fi/studentsguide/handbook/tamk?page=3126#final> and <https://www.tuni.fi/studentsguide/handbook/tamk?page=3126#maturity>

Internationalisation



Internationalisation

- Going for a study exchange or practical training abroad is an excellent opportunity to develop your language and international skillset! Every student has a **possibility to get max 12 months of support for studying and/or practical training abroad**.
- Language courses **can be substituted** by courses completed abroad. Substitutions are always agreed upon using the Learning Agreement done before the exchange.
- Language evaluation needed for exchange needs to be requested well in advance from your language teacher. Use the [TAMK language evaluation sheet](#).
- More information: <https://www.tuni.fi/studentguide/handbook/tamk?page=3126#international>

INTERNATIONALISATION MODULE

- A **voluntary, thematic study module** which includes courses with international objectives.
- A **separate mention in the degree certificate**, useful in e.g. getting a job
- Can include study exchanges, practical training abroad, intensive courses completed abroad, language studies (not mandatory for degree programme), cross-cultural communication studies, courses taught in a foreign language, international tutoring, etc.
- Minimum extent **20 ECTS credits**
- More information about the internationalisation module: <https://www.tuni.fi/studentguide/handbook/tamk?page=3207>



Support for Learning



Special Study Arrangements

- If you have been diagnosed with (expert certificate required) **a learning difficulty, illness, disability or dyslexia that severely affects your studies**, you may need special arrangements.
- You can be granted **max 20 h of special arrangements per academic year**, and they can include additional teaching, tailored exam arrangements, etc.
- If **Finnish is your native language** and you suspect you might have dyslexia but have not taken a test before, **contact TAMK dyslexia test organisers for a diagnostic test** (lukitestaus.tamk@tuni.fi). If your native language is not Finnish, you should get a diagnosis e.g. in your home country.
- More information: erityinentuki.tamk@tuni.fi & <https://www.tuni.fi/studentsguide/handbook/tamk/4653/4704?page=3126#support>



Contact Information



Let's Be in Touch!

- **Student's Guide**
<https://www.tuni.fi/studentguide/handbook/tamk/4653/4704?page=3126>
- **Languages and Communication blog**
<https://blogs.tuni.fi/langcom/>

CONTACT TEACHERS

- International Business: riitta.raimovaara@tuni.fi
- Entrepreneurship and Team Leadership:
petri.tuohimaki@tuni.fi
- Media and Arts: marianna.leikomaa@tuni.fi
- Nursing: minna.metsaportti@tuni.fi
- Environmental Engineering: taru.owston@tuni.fi
- Software Engineering: marianna.leikomaa@tuni.fi



All photos: TUNI Media Bank