

# TAMK Language and Communication Studies

Language Info Session, autumn 2024

# At a University of Applied Sciences, You Learn Professional Language

- Professional terminology
- Work-related cases and situations
- Authentic professional documents
- Oral and written communication with clients and colleagues

→ Probably very different from your earlier language studies!



# Language Teaching Is Based on the Government Decree

The student is required to demonstrate that you have attained through studies included in your university of applied sciences degree or otherwise:

such proficiency in **Finnish and Swedish** as is by law (6.6.2003/424) required of state officials functioning in a position requiring a higher education in a bilingual office and that is necessary for practising the profession and for professional development

and (16.6.2004/497)

such degree programme based oral and written proficiency in **one or two foreign languages** as is necessary for practising the profession and for professional development.

→ **Every degree programme has mandatory Finnish, Swedish and English courses at TAMK.**



# Language Studies in Your Degree Programme

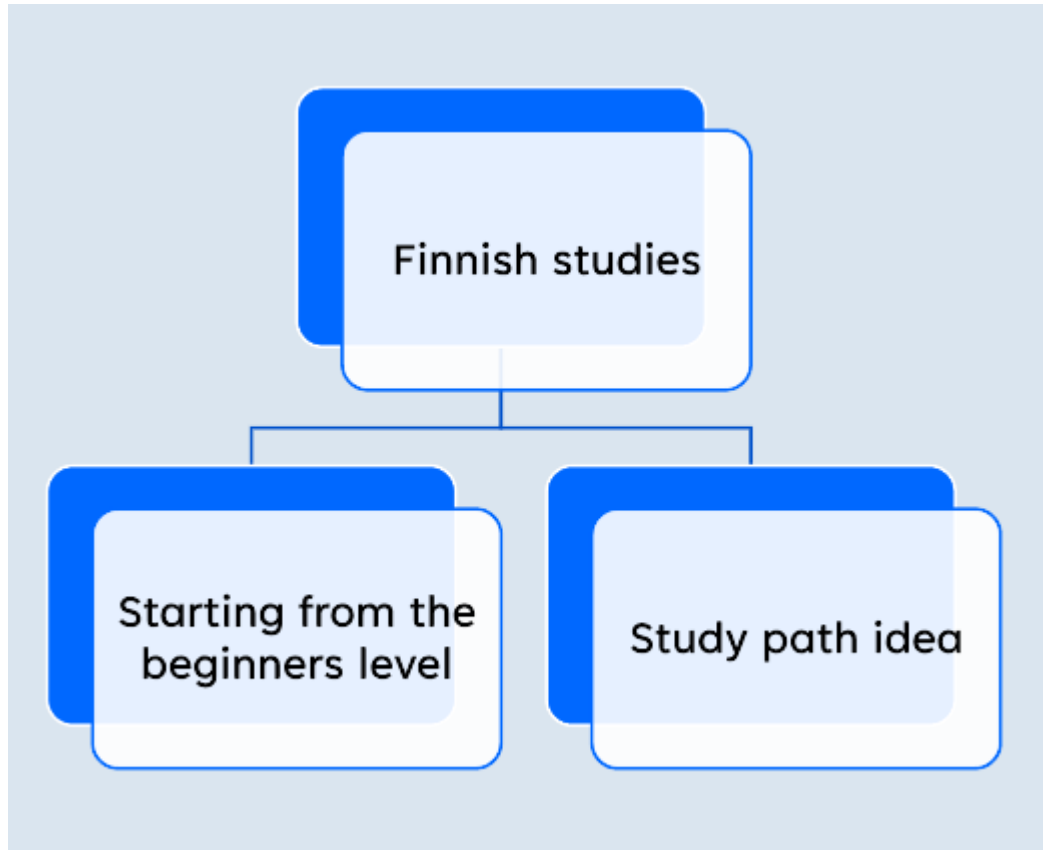


# Language Studies in Your Degree Programme

- All degree programmes in TAMK have mandatory English, Swedish, and Finnish courses
- You can find more information about these courses in TAMK Study Guide: <https://tamk-study-guide.tuni.fi/?lang=en>



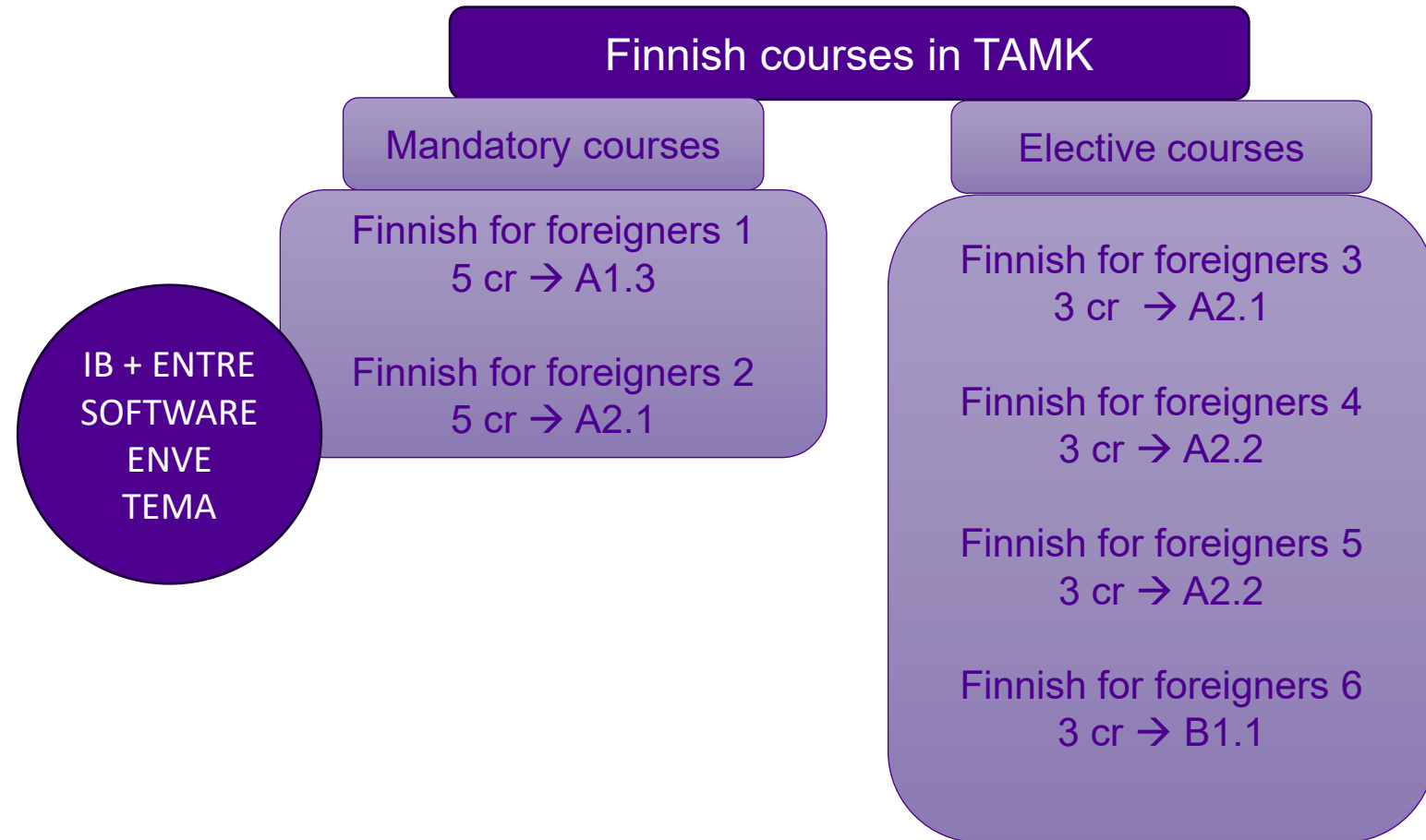
# Language Studies When Your Mother Tongue Is Other Than Finnish or Swedish



In TAMK you will start studying Finnish from your own level (CEFR).

# Language Studies in Your Degree Programme

Starting from the beginning:



# Schedule

Year 1		Year 2		Year 3	
Autumn	Spring	Autumn	Spring	Autumn	Spring
Finnish 1	Finnish 2	Finnish 3	Finnish 4	Finnish 5	Finnish 6

In three years, you are supposed to reach level B1.1, but it demands a lot of independent work in addition.



# Language Studies in Your Degree Programme

Study path: starting from your own level

EXAMPLE 1.

You have studied a little Finnish before, level A1.3

→

Start from the course **Finnish for foreigners 2**

EXAMPLE 2.

You have level A2.2

→

Start from the course **Finnish for foreigners 5**

EXAMPLE 3.

- You have level B1 or higher.
- You have done YKI-test

# Advanced Courses in TAMK

- TAMK offers several Finnish courses from skill level A2 to C1 as elective studies:

- Suomen kielen keskustelukurssi, 1 ECTS, level B1.1
- Suomen kielen kirjoittaminen, 2 ECTS, level A2.2
- Suomen kielen kirjoittaminen, 2 ECTS, level B1

- Other options for Finnish studies:
  - Language studies in [Campusonline](#)
  - [Cross-institutional studies in TUNI](#)
  - [Finnishcourses.fi](#)

# Language Scholarship for Fee-paying Students (non-EU/EEA citizens)

- Language skills must progress year-by-year for students to be granted a scholarship waiver
- Language tests are arranged every spring

Academic award **25 %**

60 cr / academic year

Academic award **50 %**

60 cr / academic year

+

Finnish language test  
(first year A2.1)

# Skill Levels and Tests

YEAR	REQUIRED SKILL LEVEL
YEAR 1 spring	A2.1
YEAR 2 spring	A2.2
YEAR 3 spring	B1.1

YEAR	TEST
YEAR 1 students	TAMK A2-level test in Spring
YEAR 2 students	YKI Basic, level 2
YEAR 3 students	Yki Intermediate, level 3

More information about the tests from the teachers in Finnish courses!

# Test Your Finnish Language Level

There are some online tests that might help you to figure out your level in Finnish. They won't give you the right course as a result, but can offer some ideas. In addition, please read the skill level descriptions!

## Skill level descriptions

- [Sanatesti](#) (word test)
- [YKI-test information page](#)
- [YKI-treenit](#) (training for different levels, not a test but a good tool to evaluate your skills)
- [University of Helsinki – Finnish language tests](#)
- [A and B level tests with Quizlet cards](#)

# Finnish as a Second Language Guidance

- TAMK offers Finnish as a Second Language (S2) **guidance**.
- Please don't hesitate to contact [ella.hakala@tuni.fi](mailto:ella.hakala@tuni.fi), if you have any questions about your language path in TAMK.
- [Book a time!](#)



**Ella Hakala**  
Senior lecturer

[ella.hakala@tuni.fi](mailto:ella.hakala@tuni.fi)

+358406621071

# Elective Language Studies



# You Can Continue Studying a Language or Start Learning a New One!

- **TAMK elective language studies:** <https://www.tuni.fi/studentsguide/handbook/tamk/4653/4704?page=3126#elective> (Finnish, English, Russian, German)
- **TUNI cross-institutional studies:** <https://crossinstitutionalstudies.tuni.fi> (a broad selection of languages)
- **KiVANET courses:** <https://www.kivanet.fi/kurssitarjonta/> (e.g. Spanish, Italian, Japanese, Chinese, Korean, Portuguese, French, German, Russian, Estonian)
- **Campus Online:** <https://campusonline.fi/en/> (e.g. Finnish, Swedish, Russian, German, Spanish, French – always make sure that credit transfer is possible if you are planning to replace a course in your degree)
- **Tampere Summer University:** <https://tampereenkesayliopisto.fi/en/course-programme/language-courses/> (a broad selection of languages, course fees)

In many of these courses, the **language of instruction** is Finnish.



# Elective Finnish Courses

- Coming up at TAMK in autumn 2024
  - Finnish for foreigners 3, 3 ECTS, level A2.1
  - Finnish for foreigners 5, 5 ECTS, level A2.2
    - These are mainly for students who aim for **Academic Award scholarship**.
- TAMK also offers several Finnish courses from skill level A2 to C1 as **elective studies**:
  - Suomen kielen keskustelukurssi, 1 ECTS, level B1.1
  - Suomen kielen kirjoittaminen, 2 ECTS, level A2.2
  - Suomen kielen kirjoittaminen, 2 ECTS, level C1
- TAMK also offers Finnish as a Second Language (S2) **guidance**. Please don't hesitate to contact [ella.hakala@tuni.fi](mailto:ella.hakala@tuni.fi), if you have any questions about your language path in TAMK.



# Credit Transfer and Exemption



# You Can Apply for Credit Transfer if

- ... you have already **completed studies of the same level** and with equivalent learning outcomes at **another higher education institution within the past 10 years**
- ... you have **competence related to course contents acquired elsewhere**, which you will demonstrate under the RVPL (Recognition and Validation of Prior Learning) system
- If your earlier language studies related to a **different field** or if their scope is different, you will need to do some additional learning assignments related to the current field of study.
- You must submit the credit transfer application to the teacher of the course concerned **before the beginning of the course** using the accreditation page in Pakki.



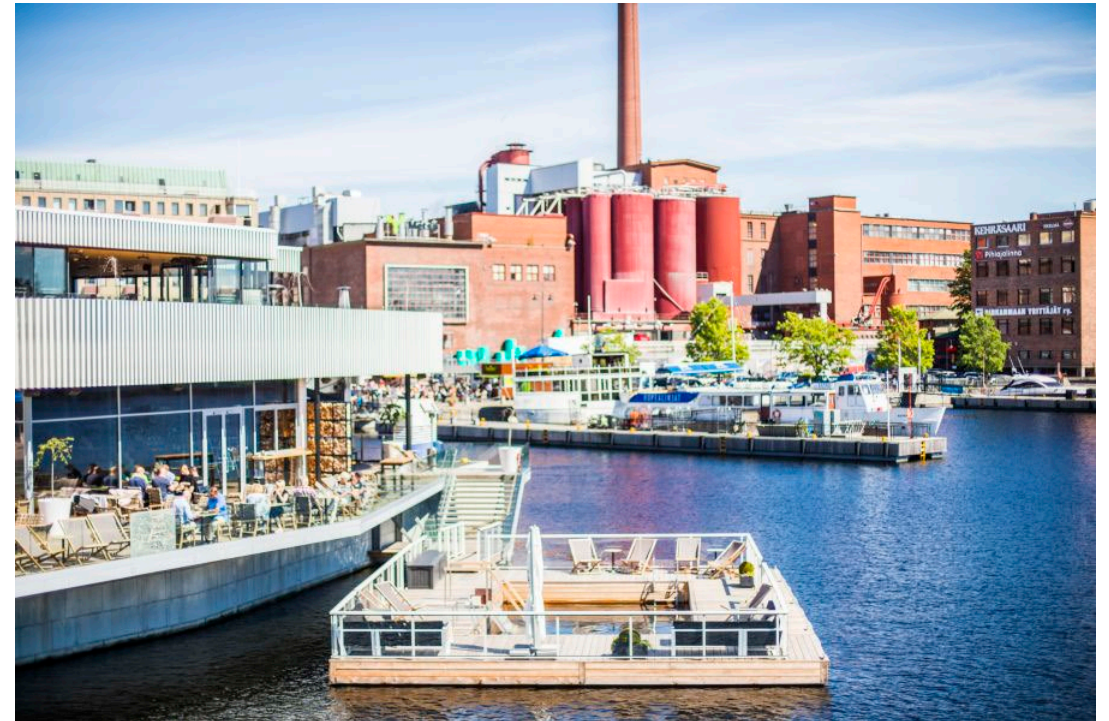
# Credit Transfer for Formal Learning

- **Substitution** (a diploma required)
  - Studies of the same field which have been completed elsewhere and which correspond to the contents at TAMK are accepted as part of your studies.
- **Inclusion** (a diploma required)
  - Studies which have been completed elsewhere are added to your studies (usually free-choice studies)



# Recognition and Validation of Prior Learning (RVPL)

- The student demonstrates competence acquired elsewhere (no diploma required).
- Competence may be demonstrated for instance by portfolio, learning diary, project work, exam, expert lecture, etc.
- You must submit the RVPL application to the teacher of the course concerned **before the beginning of the course** using the accreditation page in Pakki.
- More information about credit transfer: <https://www.tuni.fi/studentsguide/handbook/tamk/4653/4704?page=3126#credit>



# Studying Swedish is Mandatory in Finland

However, you can apply for **exemption from Swedish** or another language if

- ... you have **never studied it**.
- ... you have **dyslexia that severely affects your language studies**.
- If you are exempted, you have to choose **some other language or introduction course** instead of Swedish.
- It is strongly recommended to apply for exemption **at the beginning of your studies**.
- More information about applying for exemption:  
<https://www.tuni.fi/studentsguide/handbook/tamk/4653/4704?page=3126#exemption>



# Thesis and Maturity Test



# Thesis and Maturity Test

- Every degree programme at TAMK includes the requirement to write a final thesis, which is an **independent, self-contained learning project worth 15 ECTS credits for bachelor's programmes** (20 ECTS for midwifery and nursing degree programmes), and 30 ECTS for master's programmes.
- Intra's [Thesis at TAMK](#) page provides a detailed description of the thesis process, including **instructions** about the form and structure of the written report. In addition, the [Thesis Report Guide](#), the [Thesis Template](#) and the [Style Guide for Tampere Universities](#) should be useful.
- TAMK theses always include **abstracts in Finnish and in English (or another foreign language)**
- Students have to write a **maturity test** on the field of the thesis to demonstrate their familiarity with the field and Finnish or Swedish language skills depending on the language of their school education.
  - The maturity test can be taken **in Finnish or in English** if students have received their school education in some language other than **Finnish** or **Swedish** or completed their school education abroad.
  - In Finland, the language of school education is the language in which the person has completed the comprehensive school or the general upper secondary school, if the person has completed the general upper secondary school. If the person has completed a vocational qualification, the language of school education is however determined based on the comprehensive school leaving certificate.
- More information: <https://www.tuni.fi/studentsguide/handbook/tamk?page=3126#final> and <https://www.tuni.fi/studentsguide/handbook/tamk?page=3126#maturity>



# Internationalisation



# Internationalisation

- Going for a study exchange or practical training abroad is an excellent opportunity to develop your language and international skillset! Every student has a **possibility to get max 12 months of support for studying and/or practical training abroad**.
- Language courses **can be substituted** by courses completed abroad. Substitutions are always agreed upon using the Learning Agreement done before the exchange.
- Language evaluation needed for exchange needs to be requested well in advance from Anne Kopperoinen ([anne.kopperoinen@tuni.fi](mailto:anne.kopperoinen@tuni.fi)). Use the [TAMK language evaluation sheet](#).
- More information: <https://www.tuni.fi/studentguide/handbook/tamk?page=3126#international>

## INTERNATIONALISATION MODULE

- A **voluntary, thematic study module** which includes courses with international objectives.
- A **separate mention in the degree certificate**, useful in e.g. getting a job
- Can include study exchanges, practical training abroad, intensive courses completed abroad, language studies (not mandatory for degree programme), cross-cultural communication studies, courses taught in a foreign language, international tutoring, etc.
- Minimum extent **20 ECTS credits**
- More information about the internationalisation module: <https://www.tuni.fi/studentguide/handbook/tamk?page=3207>



# Become a Buddy for an International Student

- Every year, a large group of international exchange and degree students from various countries arrives at TAMK
- The buddy activity of the TAMK Talent Boost programme offers the opportunity to get acquainted with a new culture and create an international friendship
- Through the buddy activity, international students get the chance to learn more about the lives and thoughts of Finnish students, as well as the opportunity to learn and use the Finnish language in different situations.
- Anyone can join the buddy activity. However, please be prepared to commit to the activity for at least a semester. TAMK offers buddies the opportunity for weekly meetings in TAMK's Parvi space. Each meeting includes a supervisor, and there is a theme for each occasion that facilitates natural conversation.
- If you became interested, please contact [laura.sairanen@tuni.fi](mailto:laura.sairanen@tuni.fi)



# Support for Learning



# Individual Study Arrangements

- If you have been diagnosed with (expert certificate required) **a learning difficulty, illness, disability or dyslexia that severely affects your studies**, you may need individual study arrangements.
- You can be granted **max 20 h of individual study arrangements per academic year**, and they can include additional teaching, tailored exam arrangements, etc.
- If your **native language is not Finnish**, but you suspect dyslexia or other learning difficulties, **get in touch with [erityinentuki.tamk@tuni.fi](mailto:erityinentuki.tamk@tuni.fi)** to see if you qualify for individual study arrangements at TAMK. You can also seek an external tester who has expertise in diagnosing dyslexia in your native language.
- If you have problems studying in English, you can also contact [erityinentuki.tamk@tuni.fi](mailto:erityinentuki.tamk@tuni.fi) for support and guidance.
- More information:
  - <https://www.tuni.fi/studentsguide/handbook/tamk/4653/4704?page=3126#support>
  - <https://www.tuni.fi/en/students-guide/handbook/tamk/support-studying-and-well-being/accessibility-and-individual-study-arrangements/accessibility-and-individual-study-arrangements-student>



# TAMK Parvi and Sparris workshops

## Parvi

Support services, peer support and connecting with others!

- More information: <https://www.tuni.fi/en/students-guide/handbook/tamk/well-being-and-study-skills/well-being-0/tamk-parvi-calendar-activities-and-support-services>

## Sparris workshops

TAMK offers as additional support a range of activities that support the academic progress of our students, including Sparris workshops that help students improve their **study skills**. The workshops cover essential topics related to studying in a versatile manner.

- Time management
- Tips for reading
- Tips for writing
- Bachelor's thesis guidance
- Stage fright tips
- More information: <https://intra.tuni.fi/en/studying/well-being-and-study-skills/study-skills-0/study-skills>



# Contact Information



# Let's Be in Touch!

- **Language and communication studies in Student's Guide:**  
<https://www.tuni.fi/studentsguide/handbook/tamk/4653/4704?page=3126>
- **Language and Communication blog:**  
<http://blogs.tuni.fi/langcom>

## CONTACT TEACHERS

- International Business: [janne.hopeela@tuni.fi](mailto:janne.hopeela@tuni.fi)
- Entrepreneurship and Team Leadership: [petri.tuohimaki@tuni.fi](mailto:petri.tuohimaki@tuni.fi)
- Media and Arts: [petri.tuohimaki@tuni.fi](mailto:petri.tuohimaki@tuni.fi)
- Nursing: [minna.metsaportti@tuni.fi](mailto:minna.metsaportti@tuni.fi)
- Environmental Engineering: [emmanuel.abruquah@tuni.fi](mailto:emmanuel.abruquah@tuni.fi)
- Software Engineering: [petri.tuohimaki@tuni.fi](mailto:petri.tuohimaki@tuni.fi)



All photos: TUNI Media Bank